



DISCOVERY OF A MAKEMAKEAN MOON

ALEX H. PARKER¹, MARC W. BUIE¹, WILL M. GRUNDY², AND KEITH S. NOLL³

¹ Southwest Research Institute, 1050 Walnut Street, Suite 300, Boulder, CO 80302, USA; aparker@boulder.swri.edu

² Lowell Observatory, Flagstaff, AZ, USA

³ NASA Goddard Space Flight Center, Greenbelt, MD, USA

Received 2016 April 25; revised 2016 June 6; accepted 2016 June 8; published 2016 June 27

ABSTRACT

We describe the discovery of a satellite in orbit about the dwarf planet (136472) Makemake. This satellite, provisionally designated S/2015 (136472) 1, was detected in imaging data collected with the *Hubble Space Telescope*’s Wide Field Camera 3 on UTC 2015 April 27 at 7.80 ± 0.04 mag fainter than Makemake and at a separation of $0''.57$. It likely evaded detection in previous satellite searches due to a nearly edge-on orbital configuration, placing it deep within the glare of Makemake during a substantial fraction of its orbital period. This configuration would place Makemake and its satellite near a mutual event season. Insufficient orbital motion was detected to make a detailed characterization of its orbital properties, prohibiting a measurement of the system mass with the discovery data alone. Preliminary analysis indicates that if the orbit is circular, its orbital period must be longer than 12.4 days and must have a semimajor axis $\gtrsim 21,000$ km. We find that the properties of Makemake’s moon suggest that the majority of the dark material detected in the system by thermal observations may not reside on the surface of Makemake, but may instead be attributable to S/2015 (136472) 1 having a uniform dark surface. This “dark moon hypothesis” can be directly tested with future *James Webb Space Telescope* observations. We discuss the implications of this discovery for the spin state, figure, and thermal properties of Makemake and the apparent ubiquity of trans-Neptunian dwarf planet satellites.

Key words: Kuiper belt objects: individual (Makemake) – planets and satellites: detection

1. INTRODUCTION

Makemake is the second-brightest known trans-Neptunian Object (behind only Pluto) and the largest known classical Kuiper belt object (KBO; Gladman et al. 2008). It has the most methane-dominated spectrum of any known TNO (Licandro et al. 2006; Brown et al. 2007; Tegler et al. 2008), a very high visible albedo (Lim et al. 2010), a well-defined radius derived from stellar occultations (Ortiz et al. 2012; Brown 2013), a well-measured (albeit very small-amplitude) light curve that pins its rotational period to 7.771 hr (Heinze & de Lahunta 2009), and polarization properties very similar to Pluto and Eris, but distinct from smaller KBOs (Belskaya et al. 2012). However, despite this wealth of information, the lack of a known satellite has prohibited the measurement of Makemake’s mass and density.

We report the discovery and preliminary characterization of a Makemakean moon in *Hubble Space Telescope* (*HST*) Wide-Field Camera 3 (WFC3) imagery. While the satellite’s orbital properties are only marginally constrained from the discovery data alone, its existence will permit future precise measurement of Makemake’s mass and density given sufficient follow-up observations. In the following sections, we describe the discovery circumstances of S/2015 (136472) 1, its photometric properties, and preliminary characterization of its orbital properties. We demonstrate that this moon could account for some or all of the dark material detected in the Makemake system with thermal observations and discuss potential future avenues of research enabled by this satellite. We argue that Makemake is likely currently viewed equator-on and derive implications for its figure and thermal properties. We conclude with a discussion of the properties of dwarf planet satellites.

2. DISCOVERY CIRCUMSTANCES

As part of the *HST* GO program 13668, Makemake was imaged with WFC3 in the broad F350LP filter over the course of two visits of two back-to-back orbits each. These visits were separated by approximately two days. Each visit was bracketed by single 12 s images in which Makemake does not saturate; the remainder of each visit was filled with six 725 s exposures in which Makemake saturates. These observations were designed to enable the detection of satellites fainter than could have been found in previous satellite search programs.

Visit 1 was on 2015 April 27, from UTC 13:46:36 to 16:03:58, and visit 2 on 2015 April 29, from UTC 18:17:46 to 20:35:03. In all six 725 s images collected in visit 1, a faint source is visible $0''.57$ from Makemake; see Figure 1. Over the 132 minute duration spanned by these observations, Makemake moved $4''.22$ with respect to background sources (more than 60 times the F350LP point-spread function (PSF) FWHM); the fainter source was precisely co-moving with Makemake over this period. The source was not visible in visit 2 (see Figure 2), and subsequent efforts to reduce the confusion produced by Makemake’s PSF through difference imaging (subtracting the co-registered stack of the previous visit) or PSF modeling (using the TinyTim PSF model; Hook et al. 2008) did not reveal the source.

We injected synthetic PSFs into the visit 2 difference images in order to determine our sensitivity to a source and the implications of a non-detection. We find that sources up to 2.5 mag fainter than the visit 1 source are reliably recovered at large separations from Makemake, and sources one magnitude fainter are visible in all regions but the saturated core of Makemake (illustrated by the masked region in Figure 2). No additional satellites were revealed at these limits in either visit. Previous *HST* observations of Makemake taken with the

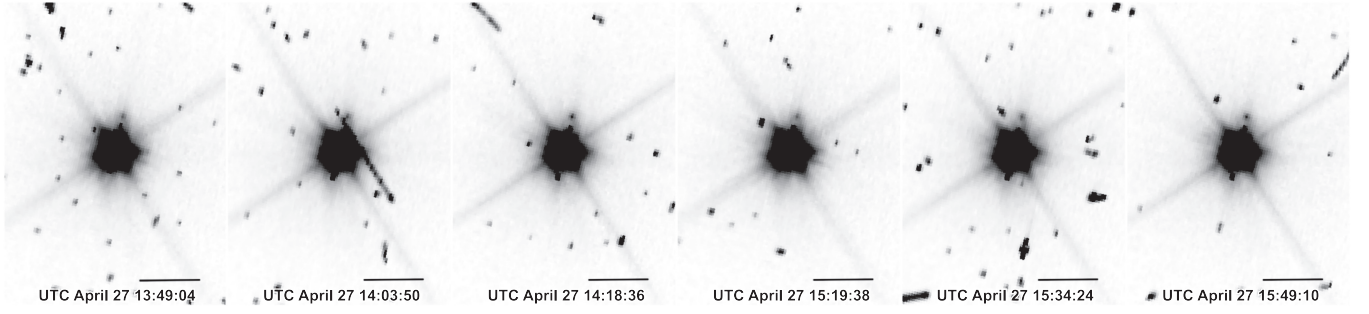


Figure 1. All six 725 s images from visit 1, collected over two subsequent *HST* orbits. The satellite is visible to the north and west of Makemake in every frame. Images have not been cleaned for cosmic rays or otherwise cosmetically enhanced. Black bar is 1". Ecliptic north is up; ecliptic east is left. Observation start times are labeled on each image. Over the time spanned by these images, Makemake moved 4".22 with respect to background sources.

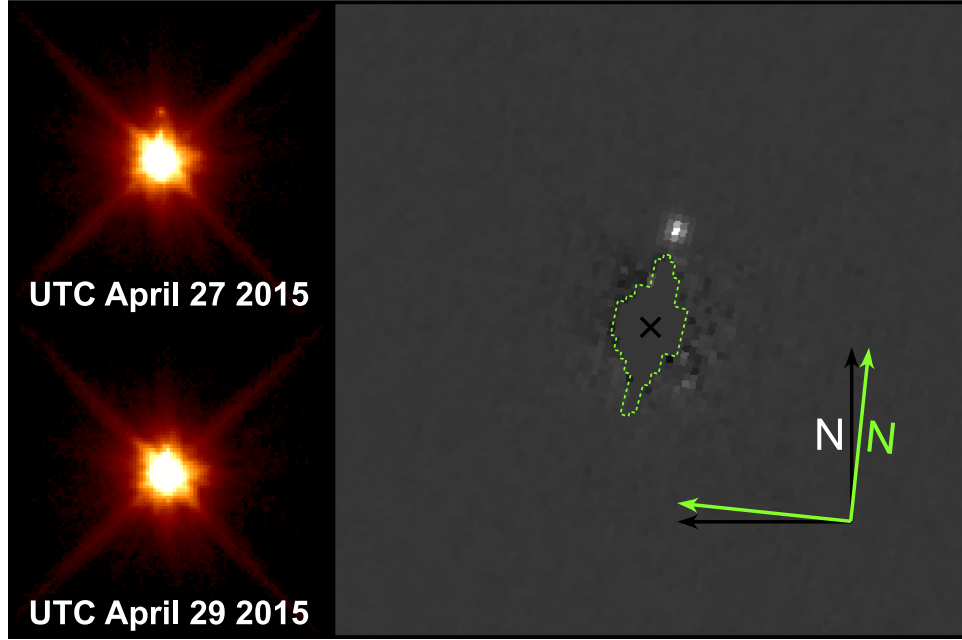


Figure 2. Left panels: co-registered stack of all visit 1 images (top) and visit 2 images (bottom). Images are displayed in their original array coordinates with the identical stretch to best compare PSF structure. Right: WCS-rotated stack of visit 1 images with co-registered visit 2 images subtracted, showing S/2015 (136472) 1. The stack is the 33rd percentile of six input images. Arrows indicate 1" in ecliptic north and east for each visit, white for visit 1 and green for visit 2. Green trace indicates masked region where S/2015 (136472) 1 would not have been recoverable in visit 2 as determined by injecting synthetic sources. White cross indicates centroid of Makemake.

Advanced Camera for Surveys (ACS) High Resolution Channel on 2006 November 19 were of sufficient sensitivity to detect this satellite (program GO 10860 included 16,550 s exposures in F606W; 5σ limiting magnitude in each from estimated from the ACS exposure time calculator is $V \sim 26$); however, the satellite is not visible in these data either. We infer from these two non-detections that the satellite spends a large fraction of its time very close to Makemake in the sky plane, likely in an edge-on orbit. We discuss this further in Section 2.2.

2.1. Photometry

For each of the six frames in which S/2015 (136472) 1 is visible, we subtracted a co-registered median stack of the six frames in which it was not visible. In five of these six difference images, we performed small-aperture photometry to measure the flux from S/2015 (136472) 1; in the sixth, a cosmic ray impinged too close to S/2015 (136472) 1. The typical signal to noise of S/2015 (136472) 1 in these frames is

Table 1
S/2015 (136472) 1 Discovery Astrometry and Photometry

JD _{mid}	mag ^a	$\Delta\lambda^b$	$\Delta\beta^c$	$\Delta R.A.^d$	$\Delta Decl.^e$
2457140.07994	25.21	-0".136	0".556	0".125	0".558
2457140.10045	25.06	-0".135	0".560	0".127	0".561
2457140.14283	25.19	-0".138	0".555	0".123	0".558
2457140.15309	25.27	-0".140	0".553	0".120	0".558
2457140.16334	25.12	-0".136	0".554	0".124	0".557

Notes.

^a AB-mag in *HST* WFC3 UVIS F350LP filter. Mean Makemake F350LP magnitude in four 12 s exposures: 17.39; uncertainty in each measurement is estimated to be 0.04 mag.

^b Sky-plane offset in ecliptic longitude, secondary to primary; $\Delta\lambda = (\lambda_2 - \lambda_1) \times \cos(\beta_1)$; positional uncertainty in each measurement is estimated to be 0".008.

^c Sky-plane offset in ecliptic latitude, secondary to primary; $\Delta\beta = \beta_2 - \beta_1$.

^d Sky-plane offset in J2000 R.A., secondary to primary; $\Delta R.A. = (R.A._2 - R.A._1) \times \cos(Decl._1)$.

^e Sky-plane offset in J2000 Decl., secondary to primary; $\Delta Decl. = Decl._2 - Decl._1$.

$S/N \sim 25$, and the photometry is listed in Table 1; given this signal to noise, we do not currently find any evidence for intrinsic variability in the satellite. Four bracketing short F350LP exposures were also median stacked (without differencing) to measure the flux from Makemake itself in the filter passband. We find that S/2015 (136472) 1 is 7.80 ± 0.04 mag fainter than Makemake in F350LP. In the absence of any color information on the satellite, we adopt this delta-magnitude for V-band photometry. Makemake is $H_v = 0.091 \pm 0.015$ (Rabinowitz et al. 2007), and from this we estimate $H_v = 7.89 \pm 0.04$ for S/2015 (136472) 1. At the time of discovery, the system was at a heliocentric range of 52.404 au, a geocentric range of 51.694 au, and observed at a phase angle of $0^\circ.781$.

2.2. Astrometry and Orbital Properties

We performed preliminary orbit modeling to determine the possible range of system parameters given the limited astrometric information derived from the discovery data. To avoid overfitting the data, we assume a prograde circular orbit for preliminary estimates and adopt a simple pass-fail criterion: if, given a set of orbit parameters, the predicted positions of S/2015 (136472) 1 at the times with measured astrometry (Table 1) are within $0''.016$ (twice the estimated raw astrometric uncertainty of $0''.008$, given $S/N \sim 25$, the dithering precision of *HST*, and the undersampled WFC3 PSF) from the measured locations at those times, and the predicted positions of S/2015 (136472) 1 at the times when it was *not* detected fall within the masked region in Figure 2, then an orbit is accepted as plausible given the discovery data alone. We densely sampled a large volume of orbital parameter space and determined the maximum plausible range of each orbital parameter of interest under the stated assumptions above.

We sampled bulk density for Makemake over the range $1.4 \text{ g cm}^{-3} \leq \rho \leq 3.2 \text{ g cm}^{-3}$ (Brown 2013) and find that the S/2015 (136472) 1 discovery observations alone do not further constrain Makemake's density. Given this range of densities, semimajor axes in $21,100 \text{ km} \lesssim a \lesssim 300,000 \text{ km}$, inertial orbital periods in $12.4 \text{ days} \lesssim \tau \lesssim 660 \text{ days}$, and prograde ecliptic inclinations in $63^\circ \lesssim i_E \lesssim 87^\circ$ are acceptable (the mutual inclination of the system is $46^\circ \lesssim i_M \lesssim 78^\circ$, and the inclination with respect to the sky plane is $83^\circ \lesssim i_S \lesssim 105^\circ$; the retrograde mirror solutions to all of these ranges are also acceptable).

Given the existence of previous *HST* satellite search data of sufficient depth to detect S/2015 (136472) 1, we consider the largest semimajor axis solutions unlikely due to the fact that these orbital configurations place S/2015 (136472) 1 at large separations from Makemake for the majority of the time; with $a = 100,000 \text{ km}$, S/2015 (136472) 1 spends $\sim 90\%$ of the time at detectable separations, whereas with the minimum allowable circular semimajor axis of $21,000 \text{ km}$, S/2015 (136472) 1 spends only $\sim 50\%$ of the time at detectable separations. On the other hand, semimajor axes in excess of $100,000 \text{ km}$ are known to exist for much less massive binary KBOs (e.g., 2001 QW322; Parker et al. 2011). The largest semimajor axis solutions are found for the highest adopted Makemake density, and these solutions are at $\sim 50\%$ of the Makemake Hill radius for this density.

Given the equations in Noll et al. (2008), if the orbit of S/2015 (136472) 1 has a semimajor axis near its lower limit and the components both have $\rho = 2 \text{ g cm}^{-3}$, the orbital

circularization timescale for a $D = 175 \text{ km}$ satellite is approximately 60 Myr , while if the semimajor axis is twice this lower limit, the orbital circularization timescale increases to longer than the age of the solar system, $\sim 6 \text{ Gyr}$. Thus, if S/2015 (136472) 1 is in an orbit with semimajor axis consistent with its discovery separation, its orbit is very likely circular; if the semimajor axis is much larger, eccentric orbits become more plausible.

3. DISCUSSION

3.1. Possibility of Serendipitous Alignment of an Unbound TNO

Given the limited amount of orbital motion about Makemake observed for S/2015 (136472) 1, we must consider the possibility that the detection is a false positive arising from another TNO serendipitously crossing the same line of sight as Makemake. We can strongly rule out this scenario with the following simple analysis. At the time of the discovery observations, Makemake was at a heliocentric ecliptic latitude of $\sim 28.5^\circ$ and a heliocentric range of $\sim 52 \text{ au}$. Since the parallax produced over the width of *HST*'s orbit will vary by nearly a full UVIS WFC3 pixel for objects within $\sim 5 \text{ au}$ of 52 au , we cap the heliocentric range of potential coincident TNOs to $47\text{--}57 \text{ au}$. Using the *Canada France Ecliptic Plane Survey* L7 synthetic model of the Kuiper belt (Petit et al. 2011), we find that the typical sky density of $H_v \leq 7.8$ TNOs with $28^\circ \leq \beta \leq 29^\circ$ and $47 \leq R \leq 57$ is $\sim 0.1 \text{ deg}^{-2}$. Given three relatively distinct epochs (counting *HST* observations from program 10860 collected in 2006 November, which did not detect the satellite) of observations capable of detecting S/2015 (136472) 1, the odds of a similarly bright or brighter TNO at a similar heliocentric distance falling within an arcsecond of Makemake in one or more epoch is less than one in 10^7 .

3.2. Dark Moon Hypothesis

Thermal observations of Makemake collected by the *Spitzer* (Stansberry et al. 2008) and *Herschel* (Lim et al. 2010) space telescopes revealed that there were at least two distinct surfaces contributing to the spectral energy distribution; the majority of the emitting surface must be very bright, but a small component must be very dark. It was argued that the presence of distinct dark terrains on the surface of Makemake was at odds with Makemake's very small light curve amplitude unless Makemake is in a pole-on viewing geometry (Brown 2013).

Given the discovery of S/2015 (136472) 1, we reconsider these thermal observations under the hypothesis that much of the dark material in the system does not reside on the surface of a modestly mottled Makemake, but rather covers the entire surface of a uniformly dark S/2015 (136472) 1. Lim et al. (2010) require a dark surface area with equivalent diameter $310 \text{ km} < D < 380 \text{ km}$, with geometric albedo $0.02 < p_v < 0.12$. For $p_v = 0.02$, the estimated H-magnitude of S/2015 (136472) 1 corresponds to a diameter of $\sim 250 \text{ km}$, too small to account for all of the dark material, but sufficient to account for a large fraction of it. This would reduce the preference for a pole-on orientation for Makemake's rotation. A very dark surface might suggest an origin distinct from other dwarf planet satellites, perhaps indicating that the satellite is a captured, formerly unbound TNO. Alternatively, a dark satellite surface may be the result of past epochs of interactions with an escaping Makemake atmosphere.

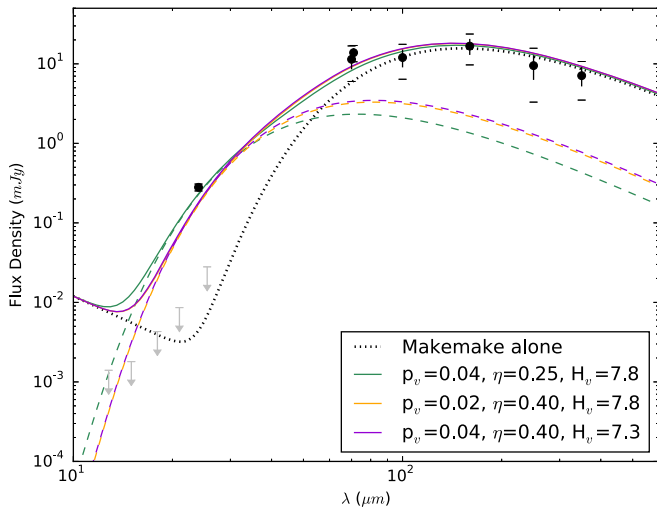


Figure 3. Models of thermal emission from Makemake and S/2015 (136472) 1 compared to observations from *Herschel* (Lim et al. 2010) and *Spitzer* (Stansberry et al. 2008). Black points: observed data, corrected to common geometry of the later *Herschel* observations, with 1σ and 2σ error ranges illustrated. Black dotted line: model Makemake thermal emission, with $D = 1430$ km, $\eta = 1.9$, and $p_v = 0.82$. Dashed colored lines illustrate three models of S/2015 (136472) 1 thermal emission, and solid colored lines illustrate sum of Makemake and S/2015 (136472) 1 model emission. None of the selected models fully reproduce the measured $24\text{ }\mu\text{m}$ flux density measured by *Spitzer*; either a more extreme surface for S/2015 (136472) 1 is required, or the surface of S/2015 (136472) 1 is not the only dark material in the system. Gray arrows illustrate the *JWST* MIRI 10,000 s 10σ detection limits for 12.8, 15, 18, 21, and 25.5 μm filters.

As a simple check, we use NEATM (Harris 1998) to model the thermal flux from the system with the occultation-updated diameter of 1430 km for Makemake and three different surfaces for S/2015 (136472) 1 and compare them against previous thermal observations of the system. Makemake’s surface is modeled with a uniform geometric albedo of 0.82 and a beaming parameter of $\eta = 1.9$. The three models of S/2015 (136472) 1 include (a) a model with Salacia-like 4% geometric albedo, but an exceptionally low beaming parameter of $\eta = 0.25$; (b) a model with an exceptionally low 2% geometric albedo, but a beaming parameter in-family with the results of Lim et al. (2010), $\eta = 0.4$; and (c) a model with a 4% geometric albedo and a beaming parameter $\eta = 0.4$, but with an absolute magnitude 0.5 mag brighter than observed for S/2015 (136472) 1, capturing the possibility that S/2015 (136472) 1 has a substantial light curve or a systematic error in its discovery photometry. The results are illustrated in Figure 3. These three models all produce between 60% and 80% of the measured $24\text{ }\mu\text{m}$ spectral flux density from the system.

3.3. Future Observations

Follow-up observations of S/2015 (136472) 1 will permit the measurement of Makemake’s mass and density. Since we cannot yet predict the future position of S/2015 (136472) 1 with respect to Makemake, it is likely that any recovery efforts will be hampered by an initial period in which S/2015 (136472) 1 is lost in a large fraction of observations before the orbit can be sufficiently well modeled and the recovery rate increased. With sufficient recovery observations, the system mass will be measured. Given a nominal geometric albedo of 4%, S/2015 (136472) 1 would have a diameter of 175 km and for equal densities would contribute $\lesssim 0.2\%$ of the system

mass; thus, the system mass will be dominated by Makemake. This contribution is further reduced if S/2015 (136472) 1 has an albedo comparable to the small satellites of Pluto ($\gtrsim 50\%$; Weaver et al. 2016), which would indicate a diameter $\lesssim 50$ km.

Because of the nearly edge-on configuration of the orbit, there is the potential for a near-future epoch of mutual events between S/2015 (136472) 1 and Makemake. As with the mutual events between Pluto and Charon in the late 1980s (e.g., Buie et al. 1992; Young et al. 2001), such a configuration could enable detailed investigations of the system and the surface properties of the two components.

Future observations with *James Webb Space Telescope* (*JWST*) can test the dark moon hypothesis; Parker et al. (2016) highlight that *JWST* could characterize the anomalous thermal excess of Makemake in detail. Figure 3 illustrates the 10,000 s 10σ MIRI detection limits in its five longest-wavelength wide filters. At $15\text{ }\mu\text{m}$, Makemake and all three S/2015 (136472) 1 model surfaces produce detectable spectral flux density, and at this wavelength the spatial resolution of *JWST* is comparable to the discovery separation of Makemake and S/2015 (136472) 1. Resolved *JWST* observations in this and the two adjacent filters would enable direct determination of the fraction of the system’s dark material that is attributable to the surface of S/2015 (136472) 1. However, the success of such observations relies upon the ability to predict the sky-plane separation of Makemake and S/2015 (136472) 1, requiring that near-term observations of S/2015 (136472) 1 be conducted to accurately measure its orbital properties.

3.4. The Figure, Obliquity, and Thermal State of Makemake

Makemake’s high rate of rotation makes its equilibrium figure a Maclaurin spheroid (Ortiz et al. 2012). Given even a small flattening, Makemake’s J_2 would likely drive the system to a low primaricentric inclination between the satellite’s orbit and the spin pole of Makemake (e.g., Porter & Grundy 2012). We note that the projected long axis of Makemake measured by Ortiz et al. (2012) runs nearly north–south, which is consistent with our determination of the orientation of the orbit plane of S/2015 (136472) 1—and thus consistent with a low primaricentric inclination. If the spin pole of Makemake and the orbit plane of S/2015 (136472) 1 are aligned, we are viewing Makemake nearly equator-on, and the sky-plane elliptical fit presented in Ortiz et al. (2012) likely reflects the true axial ratio of Makemake, implying a flattening of $\sim 15\%$. If the dark moon hypothesis is correct, then edge-on rotation for Makemake is not at odds with its low-amplitude light curve, and a low-amplitude light curve in this configuration also implies a rotationally symmetric, close-to-equilibrium figure.

Additionally, if the spin pole of Makemake and the orbit plane of S/2015 (136472) 1 are aligned, Makemake has a very *high* obliquity with respect to its heliocentric orbit (46° – 78°). A current edge-on configuration places Makemake near equinox, and if so, we estimate its thermal parameter Θ (Spencer 1990) to be ~ 70 (given a Pluto-like thermal inertia of $20\text{ J m}^{-2}\text{ s}^{-0.5}\text{ K}^{-1}$; Lellouch et al. 2011), placing it solidly in the regime in which fast rotator approximations apply. Given this high obliquity, however, as Makemake continues around its orbit, it will effectively transition into a *slow* rotator state at its solstices. Makemake is currently near aphelion, so this potential transition from fast to slow rotator is also currently synched with its heliocentric distance extrema. This could lead

to fascinating seasonal evolution on Makemake’s volatile-dominated surface.

3.5. The Satellites of Dwarf Planets

With the discovery of S/2015 (136472) 1, all four of the currently designated trans-Neptunian dwarf planets (Pluto, Eris, Makemake, and Haumea) are known to host one or more satellites. The fact that Makemake’s satellite went unseen despite previous satellite searches suggests that other very large trans-Neptunian objects that have already been subject to satellite searches (such as Sedna and (225088) 2007 OR₁₀) may yet host hidden moons. While Brown (2013) argued that the lack of a satellite for Makemake suggested that it had escaped a past giant impact, the discovery of S/2015 (136472) 1 suggests that unless it resulted from the capture of a previously unbound TNO, it too was subjected to a giant impact and its density will likely reflect that (Stewart & Leinhardt 2012; Barr & Schwamb 2016). The apparent ubiquity of trans-Neptunian dwarf planet satellites further supports the idea that giant collisions are a near-universal fixture in the histories of these distant worlds.

The authors would like to thank Simon Porter, John Spencer, and Leslie Young for helpful discussion on the tidal and thermal properties of minor planets and for constructive comments on drafts of this manuscript.

REFERENCES

- Barr, A. C., & Schwamb, M. E. 2016, *MNRAS*, **460**, 1542
 Belskaya, I. N., Bagnulo, S., Stinson, A., et al. 2012, *A&A*, **547**, A101
 Brown, M. E. 2013, *ApJL*, **767**, L7
 Brown, M. E., Barkume, K. M., Blake, G. A., et al. 2007, *AJ*, **133**, 284
 Buie, M. W., Tholen, D. J., & Horne, K. 1992, *Icar*, **97**, 211
 Gladman, B., Marsden, B. G., & Vanlaerhoven, C. 2008, in *The Solar System Beyond Neptune*, ed. M. Barucci et al. (Tucson, AZ: Univ. Arizona Press), 43
 Harris, A. W. 1998, *Icar*, **131**, 291
 Heinze, A. N., & de Lahunta, D. 2009, *AJ*, **138**, 428
 Hook, R., Stoehr, F., & Krist, J. 2008, *STECF*, **44**, 11
 Lellouch, E., Stansberry, J., Emery, J., Grundy, W., & Cruikshank, D. P. 2011, *Icar*, **214**, 701
 Licandro, J., Pinilla-Alonso, N., Pedani, M., et al. 2006, *A&A*, **445**, L35
 Lim, T. L., Stansberry, J., Müller, T. G., et al. 2010, *A&A*, **518**, L148
 Noll, K. S., Grundy, W. M., Chiang, E. I., Margot, J.-L., & Kern, S. D. 2008, in *The Solar System Beyond Neptune*, ed. M. Barucci et al. (Tucson, AZ: Univ. Arizona Press), 345
 Ortiz, J. L., Sicardy, B., Braga-Ribas, F., et al. 2012, *Natur*, **491**, 566
 Parker, A., Pinilla-Alonso, N., Santos-Sanz, P., et al. 2016, *PASP*, **128**, 018010
 Parker, A. H., Kavelaars, J. J., Petit, J.-M., et al. 2011, *ApJ*, **743**, 1
 Petit, J.-M., Kavelaars, J. J., Gladman, B. J., et al. 2011, *AJ*, **142**, 131
 Porter, S. B., & Grundy, W. M. 2012, *Icar*, **220**, 947
 Rabinowitz, D. L., Schaefer, B. E., & Tourtellotte, S. W. 2007, *AJ*, **133**, 26
 Spencer, J. R. 1990, *Icar*, **83**, 27
 Stansberry, J., Grundy, W., Brown, M., et al. 2008, in *The Solar System Beyond Neptune*, ed. M. Barucci et al. (Tucson, AZ: Univ. Arizona Press), 161
 Stewart, S. T., & Leinhardt, Z. M. 2012, *ApJ*, **751**, 32
 Tegler, S. C., Grundy, W. M., Vilas, F., et al. 2008, *Icar*, **195**, 844
 Weaver, H. A., Buie, M. W., Buratti, B. J., et al. 2016, *Sci*, **351**, aae0030
 Young, E. F., Binzel, R. P., & Crane, K. 2001, *AJ*, **121**, 552